



A layering must-have made of ultra-soft, snag-resistant microterry-it's as comfortable as it is polished in appearance.

- 6.8-ounce, 62/33/5 cotton/rayon/spandex microterry
- Snag-resistant
- Tag-free
- Cadet collar with reverse-coil dyed-to-match zipper
- Back yoke
- Self-turned cuffs and hem

Due to the nature of performance fabrics, special care must be taken throughout the printing process.

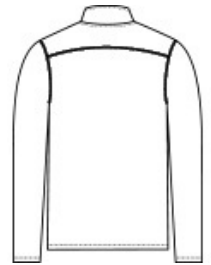
**

CARE INSTRUCTIONS

Machine Wash Cold With Like Colors. Do Not Bleach. Tumble Dry Low. Cool Iron If Necessary.



front



back

HOW TO MEASURE



CHEST WIDTH

Measure under the arm and around the fullest part of the chest with arms down, keeping tape horizontal.

SIZE CHART

	XS	S	M	L	XL	2XL	3XL	4XL
Chest	32-34	35-37	38-40	41-43	44-46	47-49	50-53	54-57

COLOR INFORMATION

